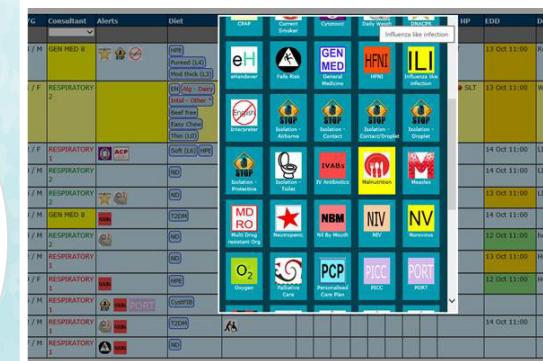


Malnutrition Week^{ANZ}

Highlight Reel

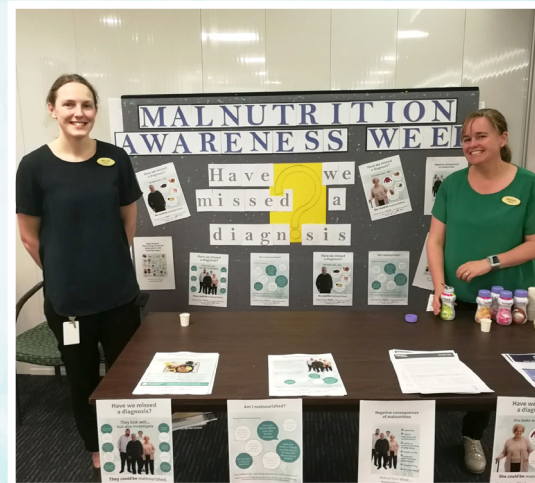

98,000 *reach*
3AW RADIO SEGMENT
WITH KAREN INGE AND
AGED CARE DIETITIAN
EMMA MITS



'Malnutrition Alert' for electronic ward boards



Northwest Health, Wangaratta



Southern District Health Board



Christchurch Hospital



Cabrini Health



Christchurch Hospital



Left: St Andrew's War Memorial Hospital

Cabrini Health



Plena Healthcare

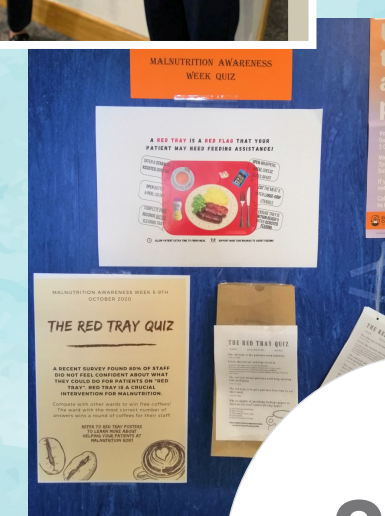

382,900 *reach*
TOTAL
MATERIALS AND MESSAGES
VIA DIETITIAN CONNECTION
AND THE DIETITIAN
COMMUNITY



Griffith Rehabilitation Hospital



WA Country Health Service



Midcentral DHB

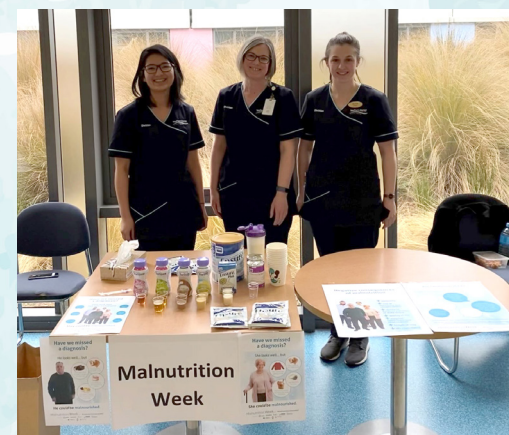


WA Country Health Service

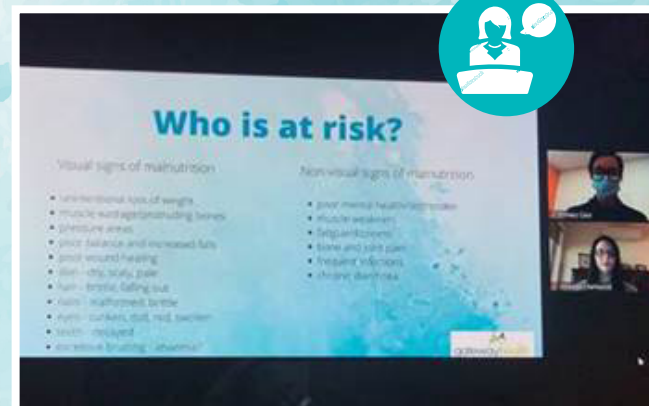

>2,000
DIETITIANS
WERE INVOLVED IN
MALNUTRITION
WEEK ANZ

As dietitians, you play a pivotal role in diagnosing and treating malnutrition – or preventing it all together.

#malnutritionweekANZ



Southern District Health Board



Gateway Health



Christchurch Hospital



Central Adelaide